



**“Expertise is always
based on special
interest.”**

● **schimek**

**COMPANY
PRESENTATION**

15.03.2023



ONE STOP SHOP. EVERYTHING AT ONE PLACE.

It has been many years since Schimek architecture & engineering started to emphasise an ecological perspective already at the planning stage of a project. The utilisation of renewable energy is not only vital for the environment but can also be of deciding economical advantage for our clients. Olivia Schimek-Hickisch is your competent partner also concerning all other topics related to construction - not only locally but also internationally. Schimek architecture & engineering pushes your construction plans towards success. We provide professional know-how from the first vision and search for the ideal building site until adding the final touch to the interior design.

A short overview of our services:

- project development
- site search
- masterplanning
- studies of practicality
- preliminary design
- concept design
- submission planning
- completion planning
- general planning
- detail planning
- submissions
- placing negotiations
- inspection of calculation
- local supervision of construction
- low-energy/passive house
- interior design
- furniture design
- colour concepts
- flood protection
- authority approvals

BIOCLIMATIC

Building in Harmony. Schimek architecture & engineering is specialised in working with natural materials and renewable energy from the very beginning. Accordingly Olivia Schimek-Hickisch was awarded the Austrian Solar Price in 2000. She shares her knowledge within her worldwide partner network and by lecturing and publishing internationally. "Our unique strength is implementing aesthetic future oriented holistic solutions."

CORPORATE ARCHITECTURE

Grabbing Visions. A company's objective is determining the usage and performance of a building. Appropriately wide ranges the experience at schimek architecture+engineering. „We are always aiming for solutions on a high technical and conceptional level targetting more efficiency and performance – and displaying the entrepreneurial spirit and vision by the means of architectural expression and design.“

FLOOD PROTECTION OF BUILDINGS

Sustainably securing habitat. schimek architecture+engineering has gained relevant experience for many years and stands for approved, integrated and sophisticated protection of buildings. "The secure foundation of our concepts for the architectural design, refurbishment or monument conservation consists of profound technical specialized know-how (e.g. also in the fields of civil engineering and geotechnics) to which we, on occasion, integrate our established network partners."

MOTORSPORTS

Racing tracks are an outstanding speciality of schimek architecture+engineering. Apart from the track planning, which is supervised by the internationally renowned track designer Dr. Franz Schreiner, a multifunctional infrastructure has to be created. Technical and visual ambitious solutions according to the high level standards of the FIA are fulfilled for grand stands, paddocks, racing towers etc.. All of this meeting highest quality in order to create a great experience for the whole family.

TEAM

Mrs. Arch. DIⁱⁿ Olivia Schimek-Hickisch

CEO and Principal Architect

› More than 30 years work experience as general planner

Mr. Arch. DI Harald Hickisch

Project Architect, site and layout planning

› More than 34 years work experience as general planner

Ing. Franz Glinsner

construction management

› More than 34 years work experience as project manager - construction manager (ÖBA)

DI Elvis Icanovic, Nina Grocholl, Enes Özyanik

Assistent Architecture

Alina Chinezoni

Office

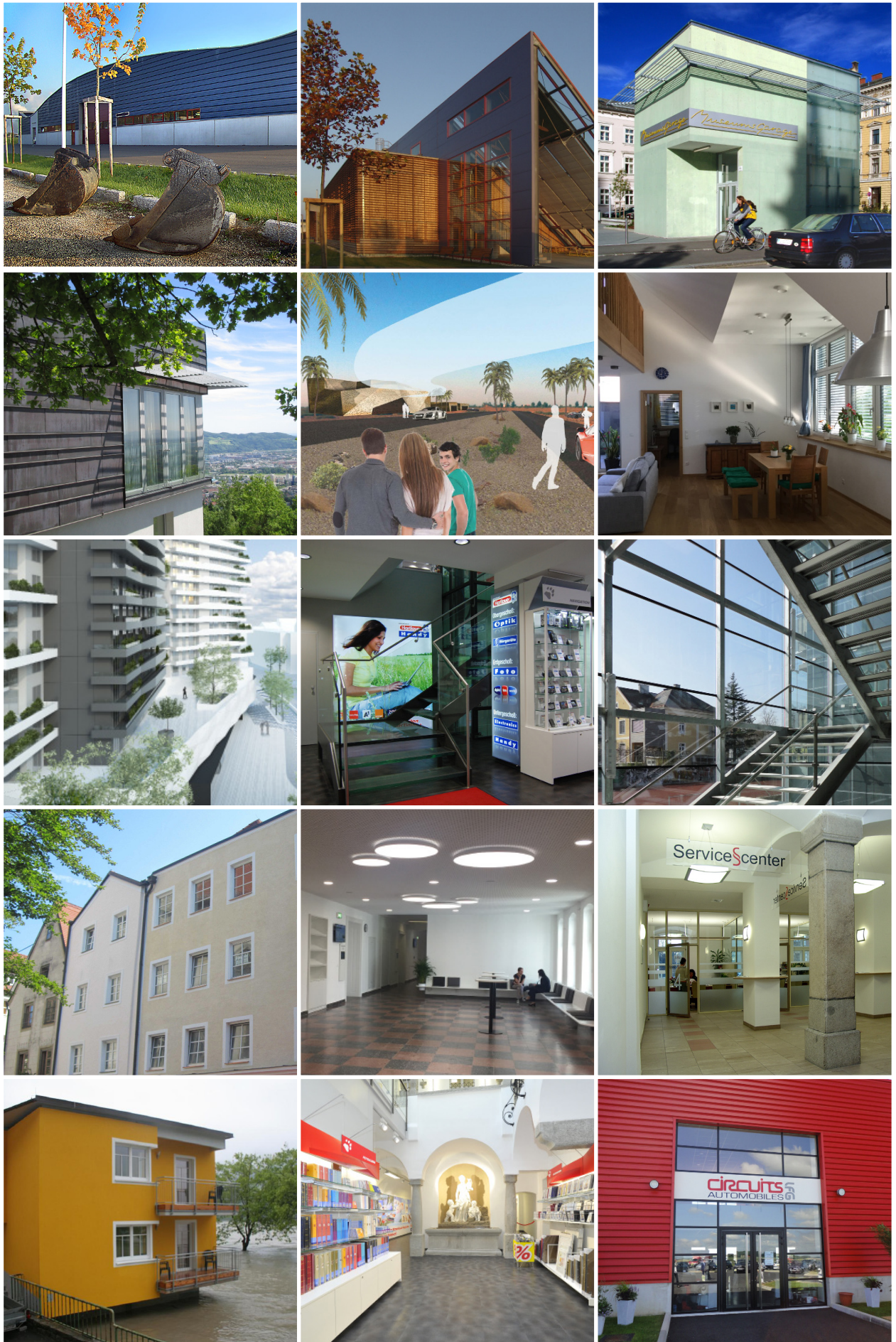
Rosemarie Schimek

Controlling

CLIENTS PROJECTS (EXTRACT)

- Bundesimmobiliengesellschaft m.b.H. (BIG)
- Magistrat der Landeshauptstadt Linz
- Real-Treuhand Management GmbH
- Immorent-PAN Grundverwertungsgesellschaft mbH
- GWG der Stadt Linz
- Alpen-Real Immobilienmakler Gesellschaft m.b.H.
- Hartlauer Handelsges.m.b.H.
- Schreiner Consulting GmbH
- F.J. Hartlauer Privatstiftung
- Schrot GmbH
- Eggenberger International
- SEMIIC, Paris Frankreich
- Gemeinde Schlierbach
- MRA Investissement & Performance SARL, Maroc

REFERENCE PROJECTS SELECTION



15.03.2023

REFERENCE PROJECTS SELECTION

New building Kindergarden Solarcity Linz /ÖÖ

assignment: architectural planning,
tendering (partially)

construction period 2002 - 2007
costs € 5,10 Mio.
surfaces 3.250 m² gross area
2.580 m² floor space



New building garage for a museum Elisabethgarage Linz /ÖÖ

assignment: general planning,
local supervision of construction

construction period 2004 - 2005
costs € 4,70 Mio.
surfaces 7.390 m² gross area
6.610 m² floor space



New building Straßenmeisterei Süd Linz /ÖÖ

assignment: architecture

construction period 2002 - 2005
costs € 2,65 Mio.
surfaces 2.850 m² gross area
2.590 m² floor space



Refurbishment and extension Pöstlingberg, Linz /ÖÖ

assignment: architecture,
local supervision of construction

construction period 2004 - 2007
costs € 1,38 Mio.
surfaces 840 m² gross area
680 m² floor space

Circuit La Ferté Gaucher La Ferté /FR

assignment: masterplanning,
architecture, racing tracks design

planning time 2008
surfaces 300.000 m²



REFERENCE PROJECTS SELECTION



Refurbishment Service Center Justiz LG Linz / OÖ

assignment: general planning,
local supervision of construction,
interior design

construction period 2005

costs € 0,43 Mio.

surfaces 500 m² gross area
370 m² floor space



Competition Wingtower

Linz-Urfahr / OÖ

assignment: Competition

planning time 2016 - 2017

costs € 31,5 Mio. apartmenttower

€ 6,0 Mio. school

€ 11,5 Mio. excavation pit

surfaces 36.800 m² gross area At.

28.000 m² floor space At.

4.700 m² gross area school

3.700 m² floor space school

15.300 m² gross area garage

Reconstruction and refurbishment Hartlauer Haus Steyr / OÖ

assignment: architecture,
local supervision of construction

construction period 2010 - 2011

costs € 0,70 Mio.

surfaces 2.100 m² gross area
1.101 m² floor space



Refurbishment BRG Dr. Schauer - Straße Wels / OÖ

assignment: general planning,
local supervision of construction

construction period 2009 - 2010

costs € 2,04 Mio.

surfaces 3.980 m² gross area
3.450 m² floor space



Property protection Machlanddamm BL7 St. Nikola / NÖ

assignment: general planning,
local supervision of construction

construction period 2008 - 2009

costs € 10.3 Mio.

surfaces 200 m² gross area
130 m² floor space

REFERENCE PROJECTS SELECTION

Reconstruction of negotiation halls LG
Linz
Linz /ÖÖ

assignment: general planning
local supervision of construction

construction period 2016 - 2017
costs € 1,10 Mio.
surfaces 770 m² gross area
600 m² floor space



Retrofit/ loft extension
Linz /ÖÖ

assignment: general planning
local supervision of construction

construction period 2016 - 2017
costs € 0,80 Mio.
surfaces 360 m² loft
750 m² storeys
255 m² floor space



Marrakech Race Academy
Marrakesch /Marokko

assignment: masterplanning,
architecture, racing tracks design

construction period since 2014
surfaces ~55 ha

Reconstruction and refurbishment
Hartlauer Haus
Linz /ÖÖ

assignment: architecture,
local supervision of construction

construction period 2010
costs € 0,42 Mio.
surfaces 670 m² gross area
540 m² floor space



Reconstruction and refurbishment
Townsquarehouse
Braunau /ÖÖ

assignment: architecture,
local supervision of construction

construction period 2011 - 2013
costs € 0,23 Mio.
surfaces 3.180 m² gross area
2.540 m² floor space

